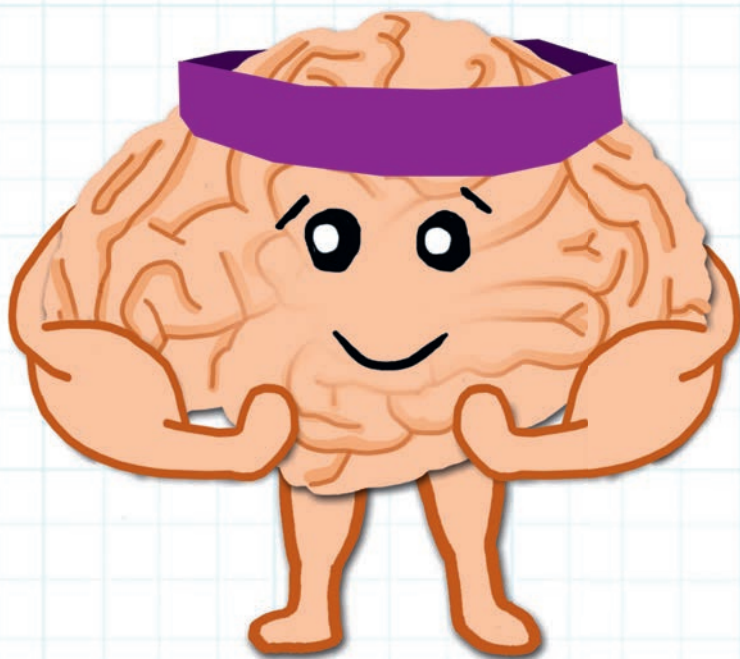


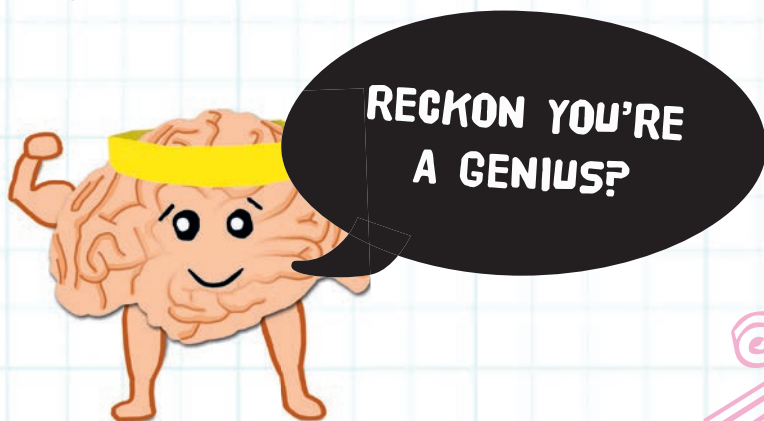


TRAIN *your* **BRAIN** **FOR ADVANCED** **PUZZLES** **BOOK 1**





INTRODUCTION



You just might be if you can crack the fiendish teasers in this little book.

This puzzle book for **ADVANCED PUZZLERS** is packed with questions to test your verbal and numerical reasoning. To solve them you'll need the ability to think logically, plus some staying power when the problems get tough.

Now, put on your thinking cap, turn the page and let the training begin!





WHAT IS MENSA?

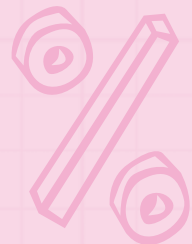


Mensa is the international society for people with a high IQ. We have more than 100,000 members in over 40 countries worldwide. The society's aims are:

- * to identify and foster human intelligence for the benefit of humanity
- * to encourage research in the nature, characteristics, and uses of intelligence
- * to provide a stimulating intellectual and social environment for its members

Anyone with an IQ score in the top two per cent of the population is eligible to become a member of Mensa – are you the "one in 50" we've been looking for?

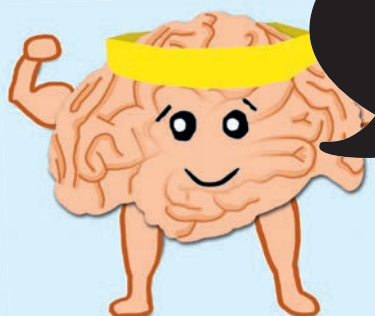
Mensa membership offers an excellent range of benefits, including networking and social activities around the world, a monthly members' magazine and lectures and seminars.



PUZZLE 1

Move up or across from the bottom left-hand 8 to the top right-hand 7. Collect nine numbers and add them together. What is the lowest you can score?

3	7	3	8	7
4	9	5	5	8
6	5	4	2	5
5	6	6	6	3
8	8	9	4	4



THE HARD ONES
ARE FUN!