

 **Mensa** KIDS

TRAIN your BRAIN

PUZZLE BOOK CONFOUNDING CONUNDRUMS

Published by Scholastic Singapore, operating under Grolier International Inc., 81 Ubi Avenue 4, #02-30 UB. One, Singapore 408830, a subsidiary of Scholastic Inc., New York, USA, by arrangement with Carlton Books.

SCHOLASTIC and associated logos are trademarks and/or registered trademarks of Scholastic Inc.

Carlton Books Limited, an imprint of the Carlton Publishing Group, 20 Mortimer Street, London, W1T 3JW

Text, design and artwork copyright © Carlton Books Limited 2016

10 9 8 7 6 5 4 3 2 1

All rights reserved. No part of this publication may be reproduced in whole or in part, or stored in a retrieval system, or transmitted in any form or by any means, electronic, mechanical, photocopying, recording, or otherwise, without written permission of the publisher.

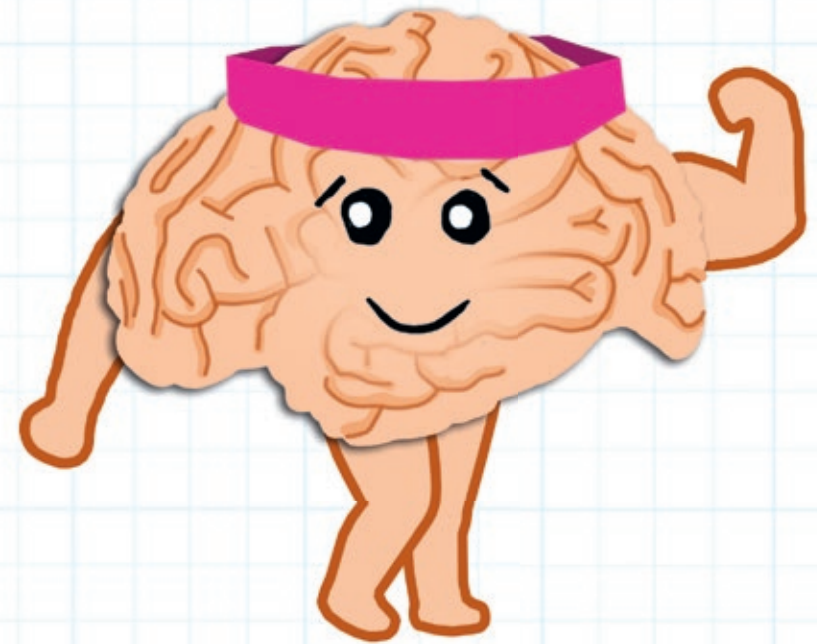
ISBN 978-981-09-8020-7

Senior Editor: Alexandra Koken

Designed by: Katie Baxendale

Production: Marion Storz

Printed in Dongguan, China



 **SCHOLASTIC**

INTRODUCTION



This puzzle book contains **CONFOUNDING CONUNDRUMS** that will train your brain in no time. It is packed from cover to cover with a fine range of puzzles and tasks to test your thinking skills and your mental abilities!

The book is divided into three skill levels, with lots of puzzles at each level. You should start with Level A, then work your way up to Level B and then finally Level C – the challenges get harder at every stage!

Now, put on your thinking cap, turn the page and let the training begin!

WHAT IS MENSA?

Mensa is the international society for people with a high IQ. We have more than 100,000 members in over 40 countries worldwide. The society's aims are:

- * to identify and foster human intelligence for the benefit of humanity
- * to encourage research in the nature, characteristics, and uses of intelligence
- * to provide a stimulating intellectual and social environment for its members

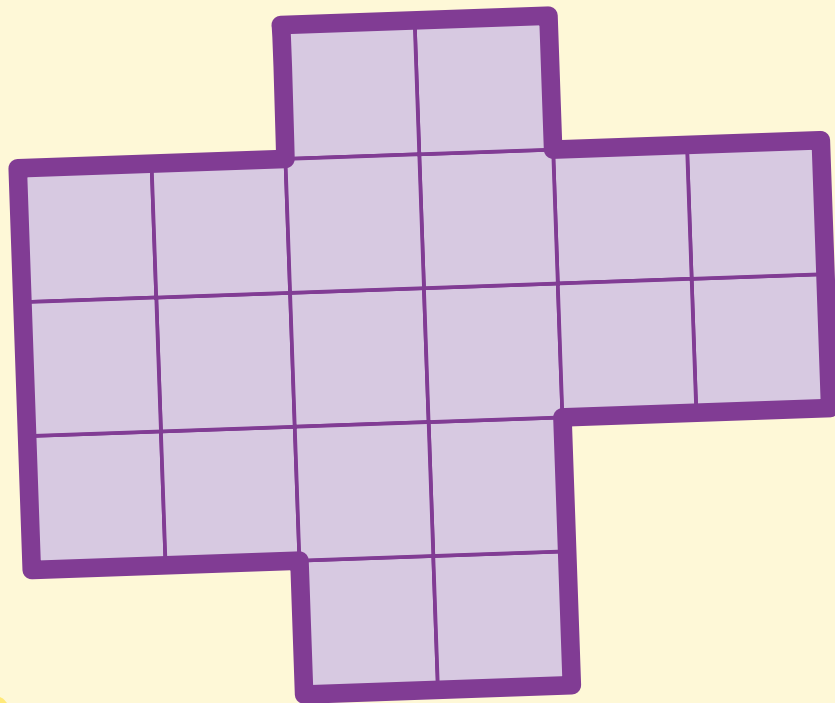
Anyone with an IQ score in the top two per cent of the population is eligible to become a member of Mensa – are you the "one in 50" we've been looking for?

Mensa membership offers an excellent range of benefits, including networking and social activities around the world, a monthly members' magazine and lectures and seminars.

LEVEL A: SUPER BRAIN

PUZZLE 1

Imagine drawing along the grid lines – can you work out how to divide this picture up into four identical shapes? Each grid square forms part of one of the four shapes, and none of the shapes overlap. You can rotate the shapes so they look the same, but you can't flip them.

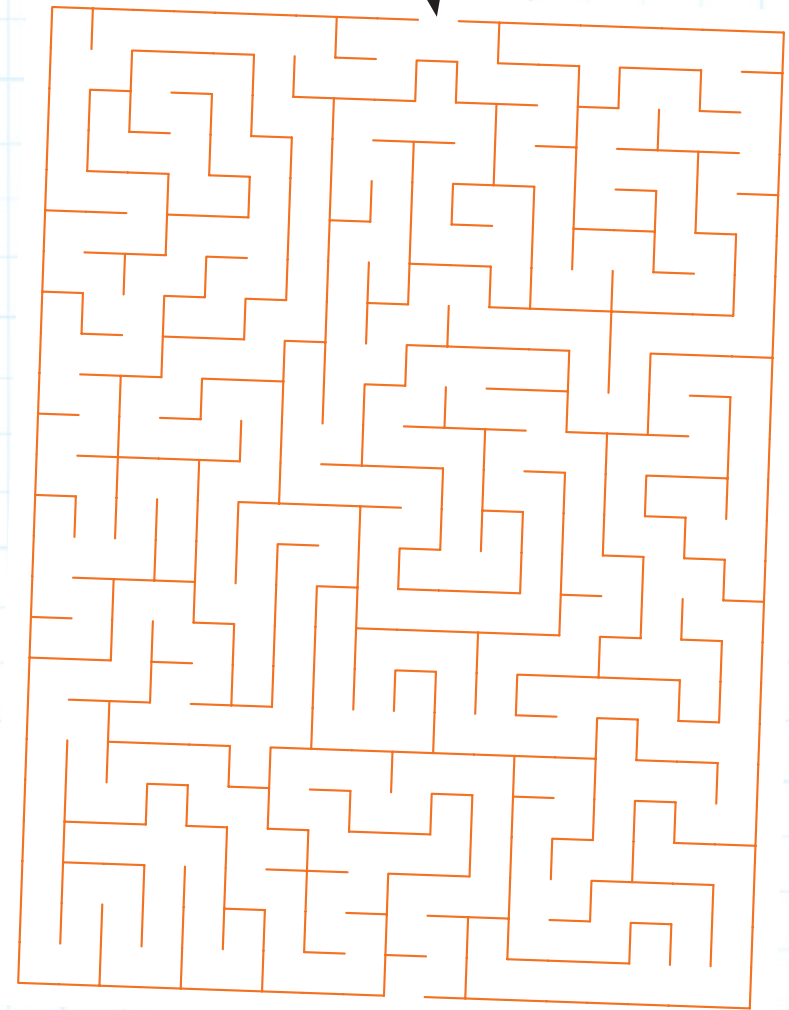


LEVEL A: SUPER BRAIN

PUZZLE 2

Can you find your way through this maze, without drawing on the page? Enter through the gap at the top, and exit through the gap at the bottom.

Entrance ↓

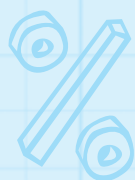


↓ Exit

PUZZLE 3

Look at this list of numbers for 30 seconds, then cover them with a piece of paper or another book. Now write out as many as you can remember on a separate piece of paper.

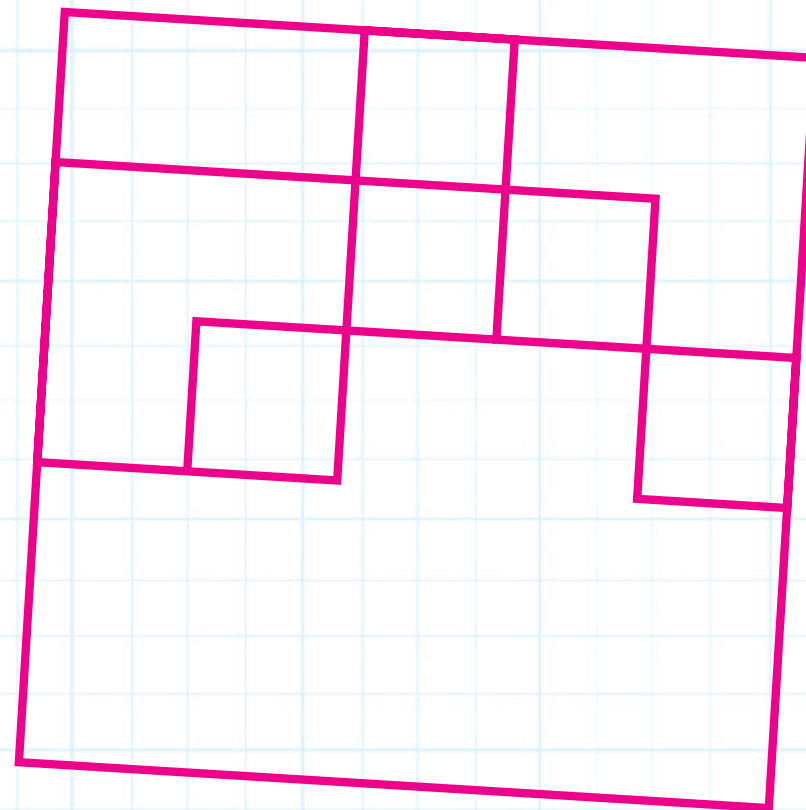
Once you've done that, uncover the page again and see how many you remembered correctly.



3 8 12 4 21 7 9 16 100



THINK HARD!



PUZZLE 4

How many rectangles and squares, of any size, can you count in this picture? Some are tricky to spot!