



# **TRAIN** *your* **BRAIN** **FOR BEGINNER** **PUZZLES** **BOOK 1**

 **Mensa® KIDS**

# **TRAIN** *your* **BRAIN** **FOR BEGINNER** **PUZZLERS** **BOOK 1**

Published by Scholastic Singapore, operating under Grolier International Inc., 81 Ubi Avenue 4, #02-30 UB. One, Singapore 408830, a subsidiary of Scholastic Inc., New York, USA, by arrangement with Carlton Books.

SCHOLASTIC and associated logos are trademarks and/or registered trademarks of Scholastic Inc.

Carlton Books Limited, an imprint of the Carlton Publishing Group, 20 Mortimer Street, London, W1T 3JW

Text and puzzle content copyright © British Mensa Limited 1994 & 1997 & 2010

Design and artwork copyright © Carlton Books Limited 1994 & 1997 & 2010 & 2014

10 9 8 7 6 5 4 3 2 1

All rights reserved. No part of this publication may be reproduced in whole or in part, or stored in a retrieval system, or transmitted in any form or by any means, electronic, mechanical, photocopying, recording, or otherwise, without written permission of the publisher.

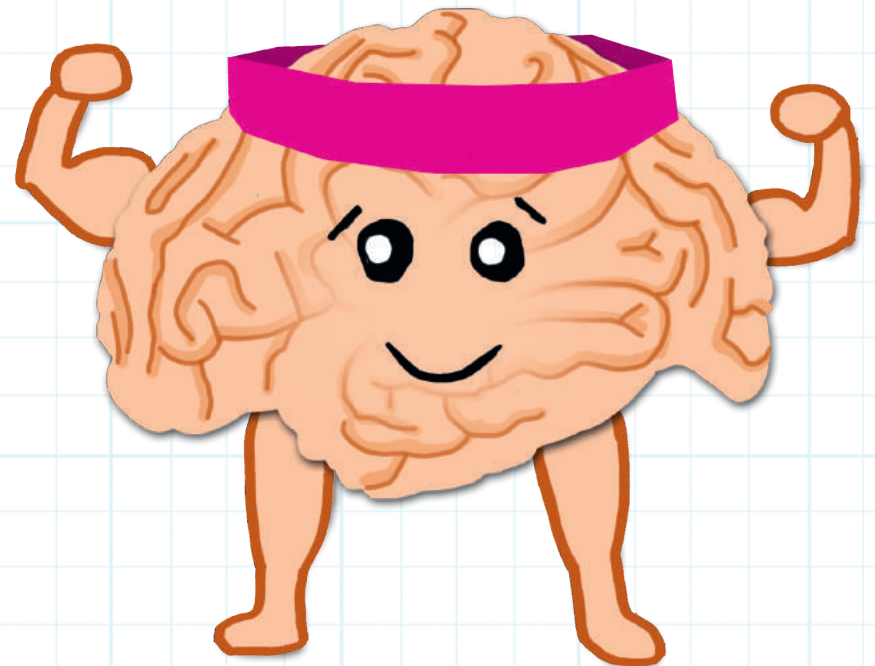
ISBN 978-981-09-8012-2

Senior Editor: Alexandra Koken

Designed by: Katie Baxendale

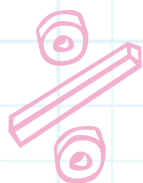
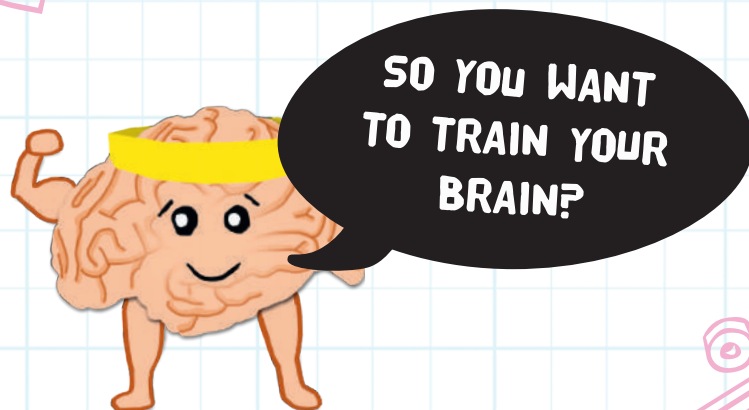
Production: Marion Storz

Printed in Dongguan, China



 **SCHOLASTIC**

## INTRODUCTION



This little book will get your grey cells in shape in no time.

This puzzle book for **BEGINNERS** is packed with questions to test your verbal and numerical reasoning. To solve them you'll need the ability to think logically, plus some staying power when the problems get tough.

Now, put on your thinking cap, turn the page and let the training begin!



## WHAT IS MENSA?



Mensa is the international society for people with a high IQ. We have more than 100,000 members in over 40 countries worldwide. The society's aims are:

- \* to identify and foster human intelligence for the benefit of humanity
- \* to encourage research in the nature, characteristics, and uses of intelligence
- \* to provide a stimulating intellectual and social environment for its members

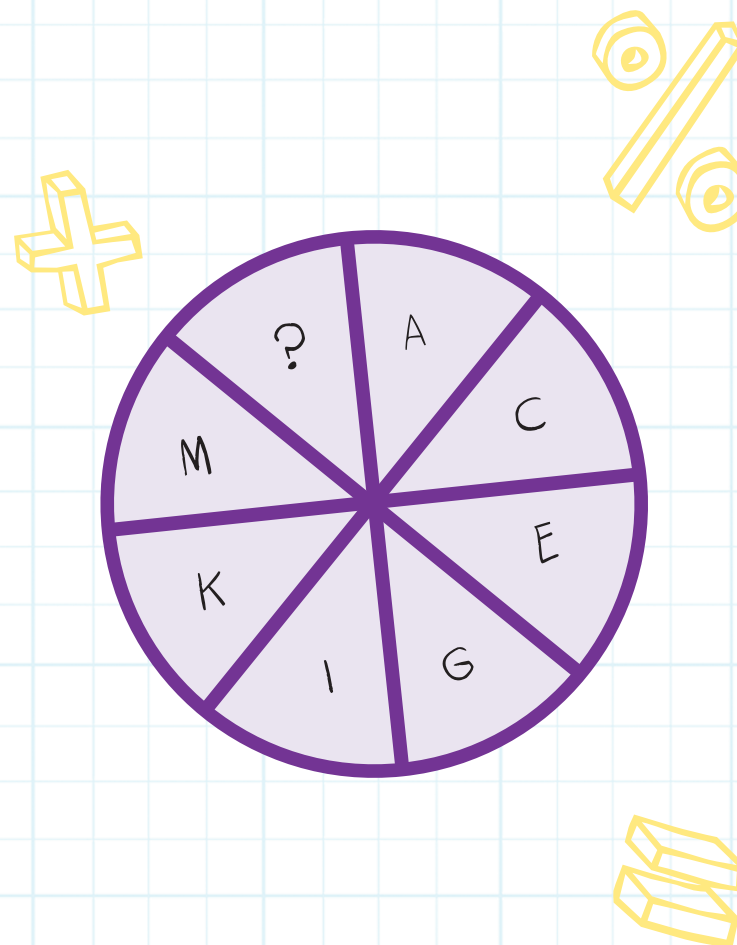
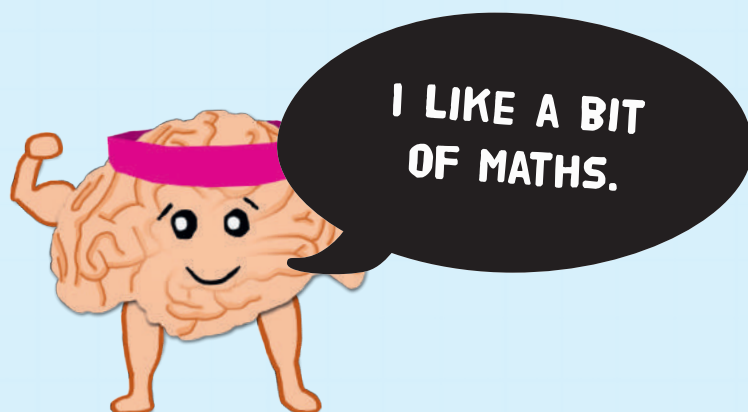
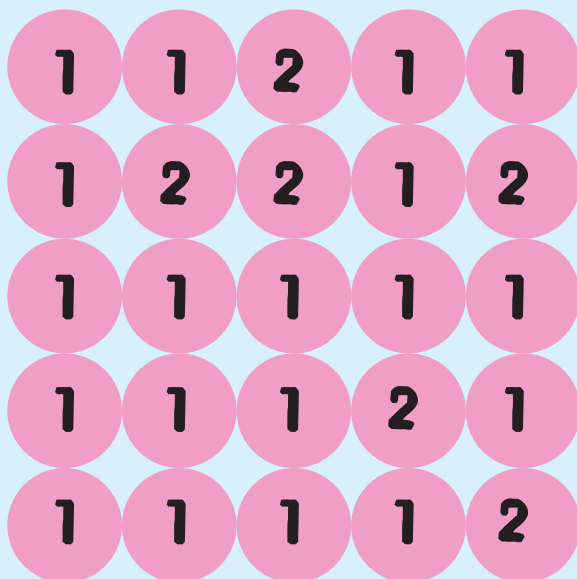
Anyone with an IQ score in the top two per cent of the population is eligible to become a member of Mensa – are you the "one in 50" we've been looking for?

Mensa membership offers an excellent range of benefits, including networking and social activities around the world, a monthly members' magazine and lectures and seminars.



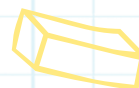
## PUZZLE 1

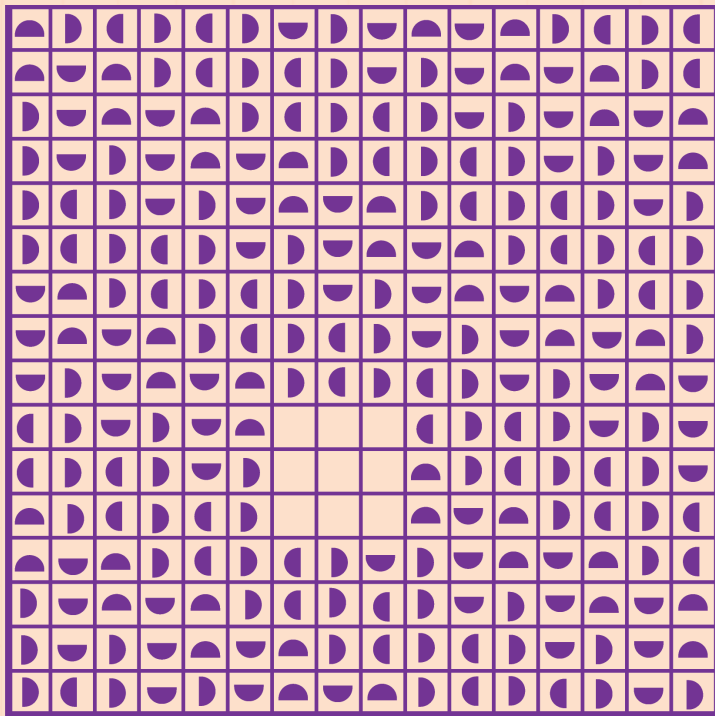
Move up or across from the bottom left-hand 1 to the top right-hand 1.  
Collect nine numbers and add them together.  
What is the highest you can score?



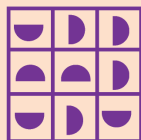
## PUZZLE 2

Replace the question mark in the circle above with the missing letter.

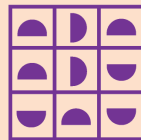




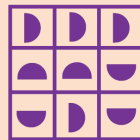
A



B



C



D



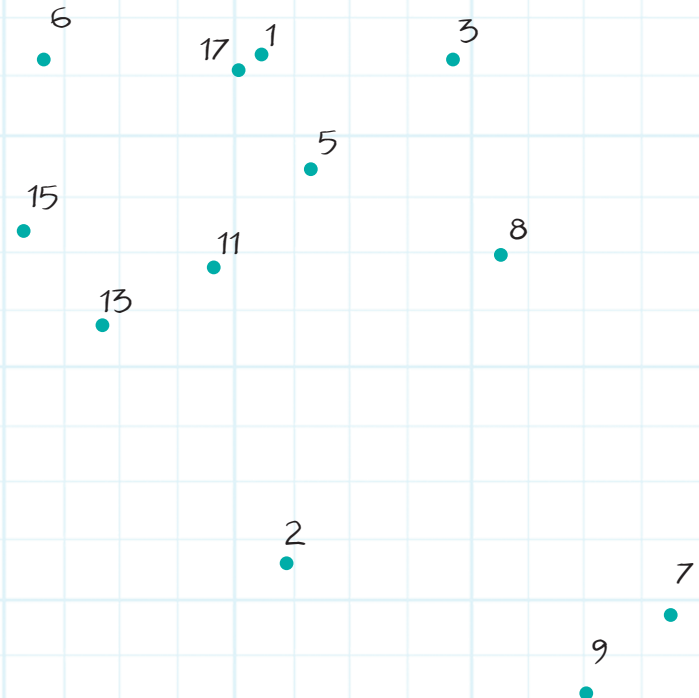
### PUZZLE 3

Which of these patterns fits into the blank section?



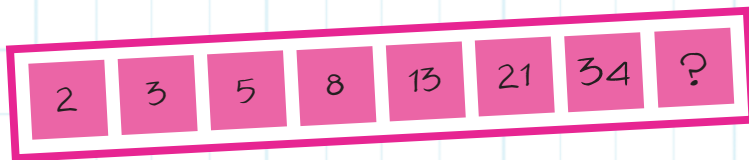
### PUZZLE 4

Join together the dots using odd numbers only. Start at the lowest and discover the object. What is it?



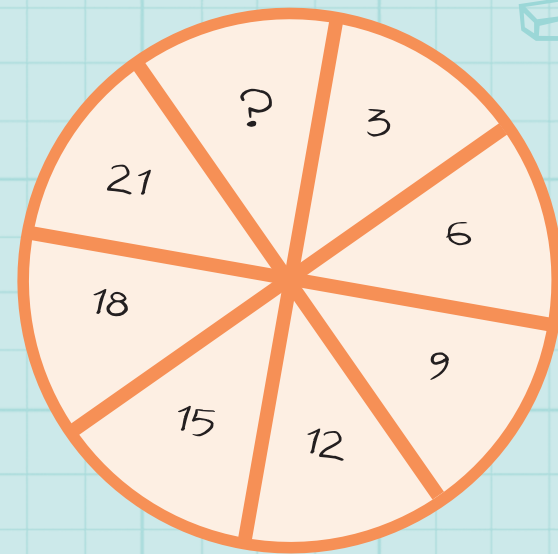
## PUZZLE 5

Can you find the number which comes next in this sequence?



## PUZZLE 6

Correct this equation by moving one match.



## PUZZLE 7

Replace the question mark with the missing number in the circle above.





### ANSWER 1

12.

### ANSWER 2

O. Reading clockwise from the top, miss one letter each time.

### ANSWER 3

A. Pattern is: 2 with the arch on top, 4 with the arch at right, 3 with the arch on bottom, 2 with the arch at left. Start at the top left corner and move down in vertical lines, starting at the top of the next column when you reach the bottom.

### ANSWER 4

A hammer.

### ANSWER 5

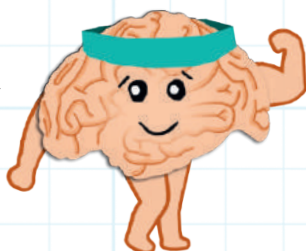
55. Add the two last numbers together.

### ANSWER 6

| V = V | - ||

### ANSWER 7

24. Reading clockwise from the top, each number increases by 3.



WELL DONE!